

YEAR 2018

CORE STATION 5038

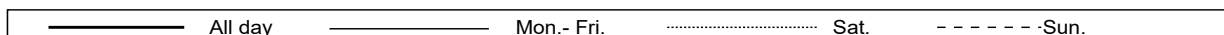
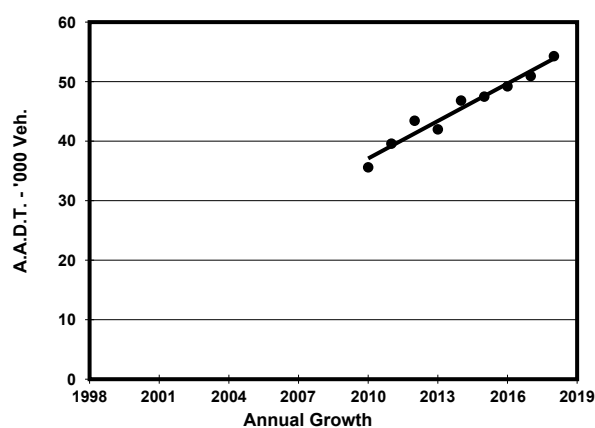
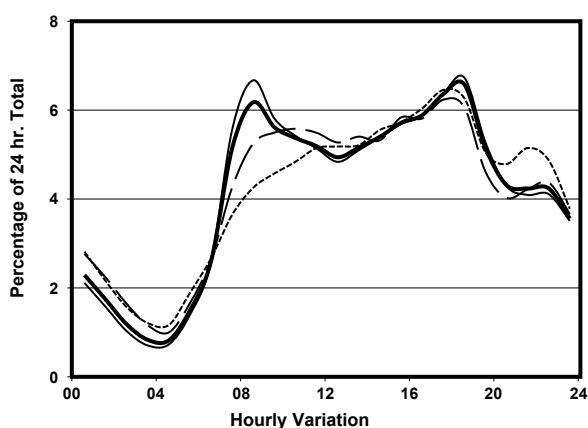
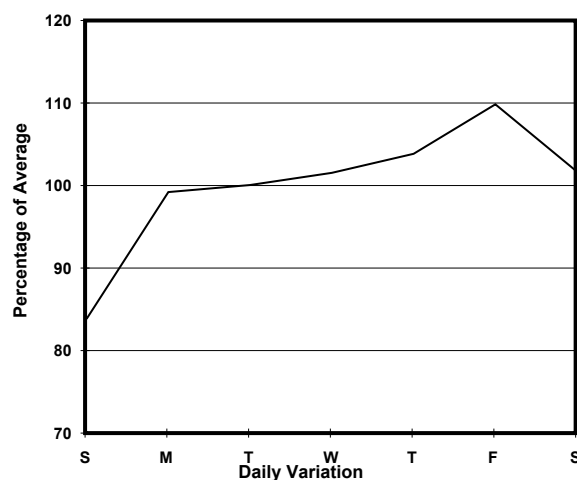
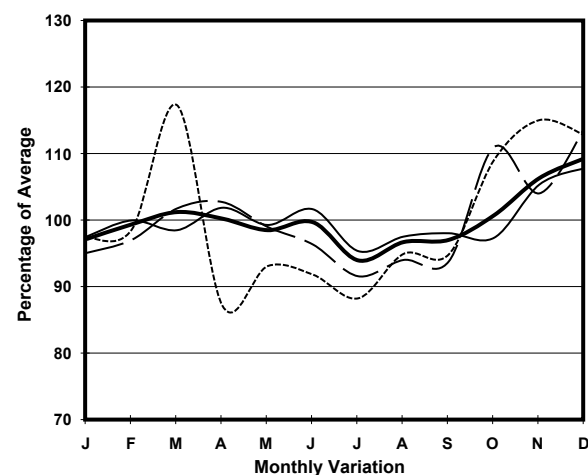
ROAD NETWORK MAJOR

ROAD TYPE EXPRESSWAY

LINK NAM WAN TUNNEL (from EAST TSING YI VIADUCT to CHEUNG TSING HIGHWAY)



1. TRAFFIC FLOW VARIATION AND GROWTH



2. TRAFFIC CHARACTERISTICS (BY DIRECTION)

Parameter	All - Day	Mon. - Fri.	Sat.	Sun.
EAST BOUND				
A.A.D.T.	28520	29370	29400	25180
R 12 / 24 - %	68.8	69.9	67.1	64.2
R 16 / 24 - %	85.5	86.1	83.5	83.8
AM Peak Hour	0800-0900	0800-0900	0900-1000	0800-0900
One-way flow at AM peak hour	1850	2060	1680	1170
T - % (AM)	-	17.5	-	-
PM Peak Hour	1800-1900	1800-1900	1800-1900	1800-1900
One-way flow at PM peak hour	1940	2020	1840	1740
T - % (PM)	-	14.9	-	-
Prop.of commercial vehicles - 16 hr.	-	18	-	-
WEST BOUND				
A.A.D.T.	25760	26980	26330	20640
R 12 / 24 - %	66.2	67.2	64.9	61.3
R 16 / 24 - %	85.5	86.6	82.9	81.5
AM Peak Hour	0800-0900	0800-0900	0900-1000	0900-1000
One-way flow at AM peak hour	1500	1700	1380	940
T - % (AM)	-	22.5	-	-
PM Peak Hour	1700-1800	1800-1900	1700-1800	1600-1700
One-way flow at PM peak hour	1640	1770	1660	1330
T - % (PM)	-	18.9	-	-
Prop.of commercial vehicles - 16 hr.	-	21.9	-	-

3. OTHER INFORMATION AND COMMENT

4. Vehicle classification and occupancy - Monday to Friday

Time		Class of vehicle									
		Motor Cycle	Private Car	Taxi	Private LB	PLB	Goods veh.		Non Fr. Bus	Fr. Bus	
							Light	M & H		SD	DD
0700-0800	Pro	2.0	50.7	20.8	0.2	0.0	12.2	9.9	3.3	0.0	1.0
	Ocp	1.1	1.3	2.3	7.0	0.0	1.5	1.2	17.1	0.0	14.1
0800-0900	Pro	1.7	52.8	14.6	0.1	0.0	11.2	13.6	4.9	0.1	1.1
	Ocp	1.0	1.2	2.3	2.0	0.0	1.5	1.1	18.4	1.0	17.9
0900-1000	Pro	0.6	44.9	14.6	0.0	0.0	15.8	17.3	5.4	0.0	1.3
	Ocp	1.0	1.4	2.4	0.0	0.0	1.5	1.2	9.0	0.0	15.3
1000-1100	Pro	1.1	44.1	18.2	0.1	0.0	13.0	18.4	4.1	0.0	1.0
	Ocp	1.0	1.5	2.7	13.0	0.0	1.4	1.2	14.9	0.0	14.4
1100-1200	Pro	1.5	43.0	19.2	0.0	0.0	14.4	17.2	3.5	0.0	1.2
	Ocp	1.1	1.7	2.5	0.0	0.0	1.4	1.1	15.5	0.0	17.4
1200-1300	Pro	1.2	42.3	21.8	0.3	0.0	11.4	17.8	4.3	0.0	1.0
	Ocp	1.0	1.5	2.3	4.0	0.0	1.5	1.1	16.0	0.0	18.2
1300-1400	Pro	0.7	41.3	20.3	0.1	0.0	11.1	20.4	5.1	0.0	0.9
	Ocp	1.2	1.6	2.6	2.0	0.0	1.5	1.2	16.3	0.0	20.1
1400-1500	Pro	0.6	45.6	20.2	0.3	0.0	13.2	14.2	4.9	0.0	1.0
	Ocp	1.0	1.5	2.3	2.5	0.0	1.5	1.1	12.2	0.0	15.7
1500-1600	Pro	0.6	42.0	20.3	0.4	0.0	14.6	16.0	5.0	0.0	1.1
	Ocp	1.0	1.7	2.6	3.7	0.0	1.4	1.2	13.0	0.0	26.5
1600-1700	Pro	0.3	47.1	17.1	0.1	0.0	11.9	16.5	5.8	0.0	1.1
	Ocp	1.0	1.6	2.0	2.0	0.0	1.5	1.1	15.8	0.0	17.1
1700-1800	Pro	1.0	49.0	20.6	0.4	0.0	9.6	11.8	6.7	0.0	1.0
	Ocp	1.0	1.3	2.0	5.7	0.0	1.3	1.1	14.6	0.0	18.7
1800-1900 Peak hour	Pro	1.4	56.9	17.0	0.2	0.0	7.8	9.6	6.2	0.0	0.9
	Ocp	1.0	1.5	2.3	1.0	0.0	1.4	1.2	13.4	0.0	24.8
1900-2000	Pro	0.4	57.9	16.2	0.1	0.0	5.6	7.9	11.1	0.0	0.9
	Ocp	1.0	1.2	2.0	1.0	0.0	1.3	1.1	26.9	0.0	21.6
2000-2100	Pro	0.5	51.9	24.1	0.0	0.0	6.5	9.5	6.2	0.0	1.4
	Ocp	1.0	1.4	2.1	0.0	0.0	1.4	1.2	11.0	0.0	22.4
2100-2200	Pro	0.2	48.2	30.7	0.0	0.0	6.3	7.4	5.8	0.0	1.4
	Ocp	1.0	1.3	2.1	0.0	0.0	1.1	1.1	15.5	0.0	20.5
2200-2300	Pro	0.3	48.4	38.0	0.0	0.0	4.0	5.6	2.3	0.0	1.4
	Ocp	1.5	1.5	2.1	0.0	0.0	1.2	1.1	8.4	0.0	19.3
16 hours	Pro	0.9	48.2	20.2	0.2	0.0	10.7	13.4	5.3	0.1	1.1
	Ocp	1.0	1.4	2.3	4.1	0.0	1.4	1.1	16.0	1.0	18.9

Legend

Pro. Proportion of vehicles in % (Sum may not add up to 100% due to figure rounding)*

Ocp. Average occupancy of vehicles including both driver and passengers*

M&H Medium and Heavy

***** All traffic data are collected from combined bounds except for one way traffic